

TECHNICAL BULLETIN A

CONFIGURATION OF THE NM-422ETH FOR UDP SOCKETS MULTICAST FUNCTION

After discovering and setting the NM-422ETH to a fixed IP address as described in the user manual the following steps must be completed to setup the device to multicast the received NMEA data to UDP sockets.

STEP 1: Double click on the discovered device in the **Digi Discovery Utility** to bring up the login menu on an http explorer. Complete the appropriate field and press the **Login** button

Username: root

Password: nm2003

Firefox | Digi Connect ME Configuration and Manage... | http://192.168.0.208/login.htm

Digi
Connectware™

Digi Connect ME Configuration and Management

Login

Welcome to the Configuration and Management interface of the Digi Connect ME
Please specify the username and password to login to the web interface.
See the User Guide and documentation for more information on logging in or retrieving a lost password.

Username:
Password:

Copyright © 1996-2005 Digi International, Inc. All rights reserved.
www.digi.com

STEP 2: Click on **Serial Ports** under **Configuration menu** as shown below

Firefox | Digi Connect ME Configuration and Manage... | http://192.168.0.208/home.htm

Digi
Connectware™

Digi Connect ME Configuration and Management

- Home
- Configuration**
 - Network
 - Serial Ports**
 - GP
 - Alarms
 - System
 - Remote Management
 - Users
- Management**
 - Serial Ports
 - Connections
- Administration**
 - File Management
 - Backup/Restore
 - Update Firmware
 - Factory Default Settings
 - System Information
 - Reboot
- Logout

Home

Getting Started

Tutorial Not sure what to do next? This Tutorial can help.

System Summary

Model:	Digi Connect ME
IP Address:	192.168.0.208
MAC Address:	00:40:9D:27:76:39
Description:	None
Contact:	None
Location:	None
Device ID:	00000000-00000000-00409DFF-FF277639

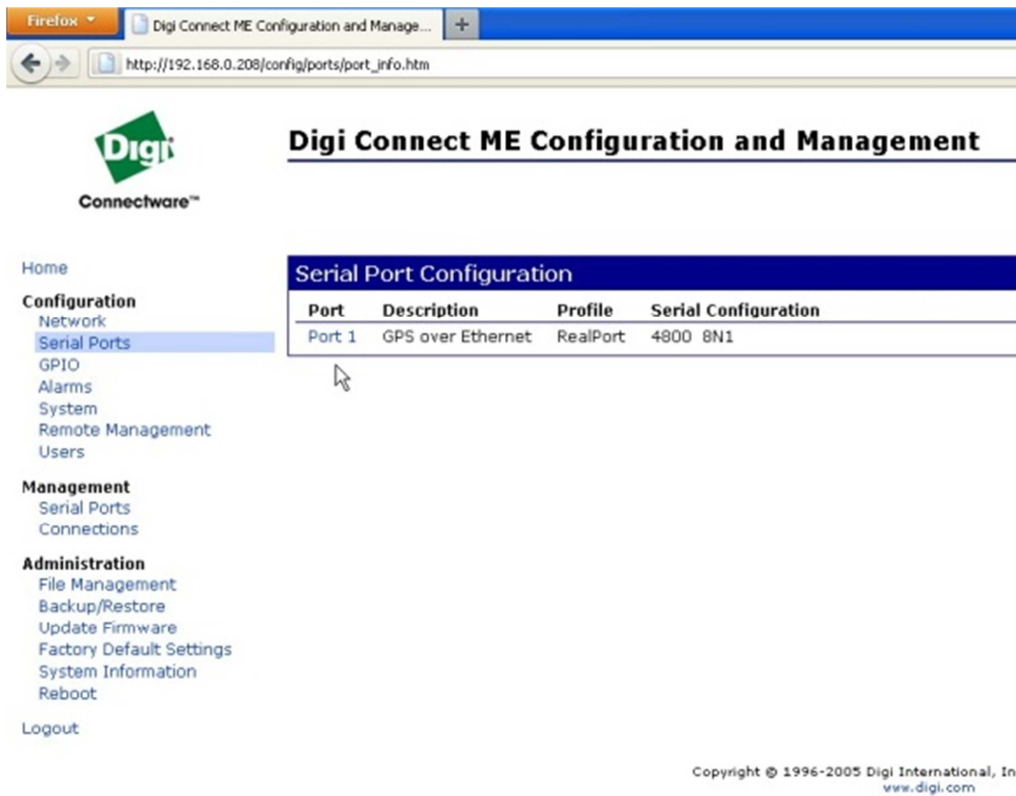
User Interface

Web Interface (Default): Enabled

Custom Interface:

Copyright © 1996-2005 Digi International, Inc.
www.digi.com

STEP 3: Click on **Port 1** under **Serial Port Configuration** menu

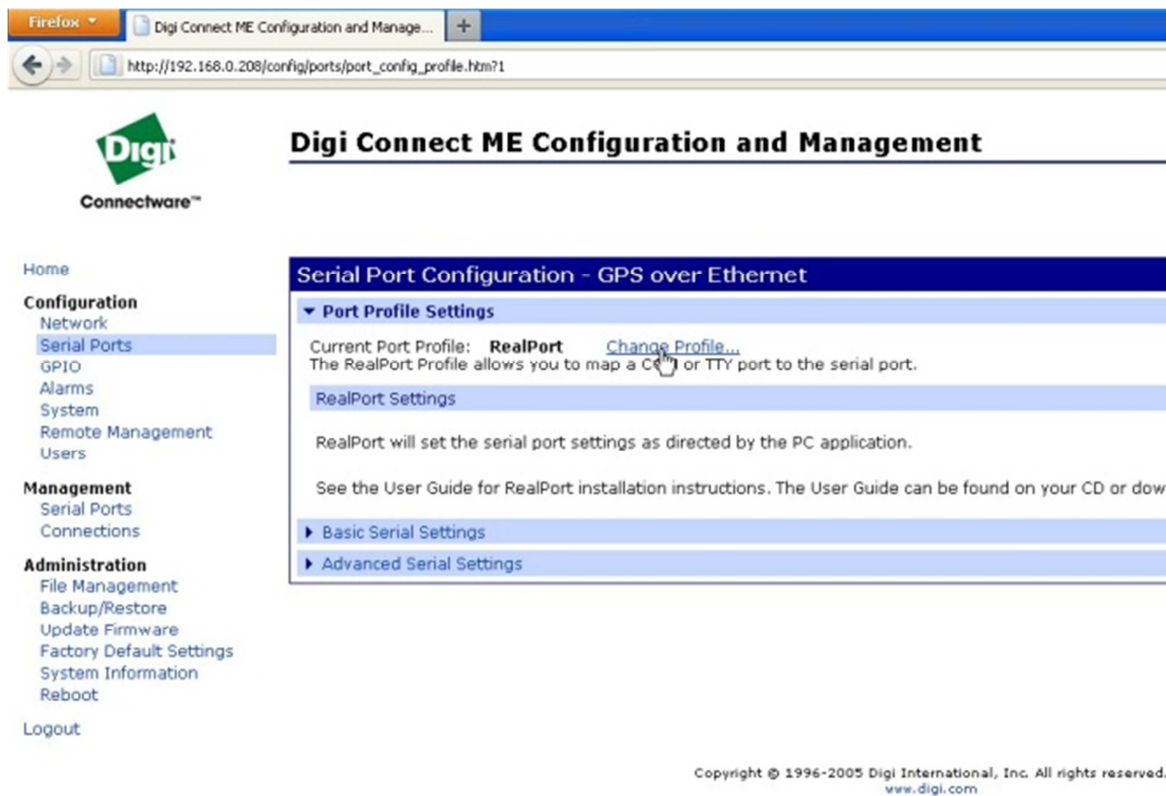


The screenshot shows a web browser window with the URL `http://192.168.0.208/config/ports/port_info.htm`. The page title is "Digi Connect ME Configuration and Management". On the left is a navigation menu with categories: Home, Configuration (Network, Serial Ports, GPIO, Alarms, System, Remote Management, Users), Management (Serial Ports, Connections), Administration (File Management, Backup/Restore, Update Firmware, Factory Default Settings, System Information, Reboot), and Logout. The "Serial Ports" link is highlighted. The main content area is titled "Serial Port Configuration" and contains a table with the following data:

Port	Description	Profile	Serial Configuration
Port 1	GPS over Ethernet	RealPort	4800 8N1

Copyright © 1996-2005 Digi International, Inc. www.digi.com

STEP 4: Click **Change Profile...** to set a new profile

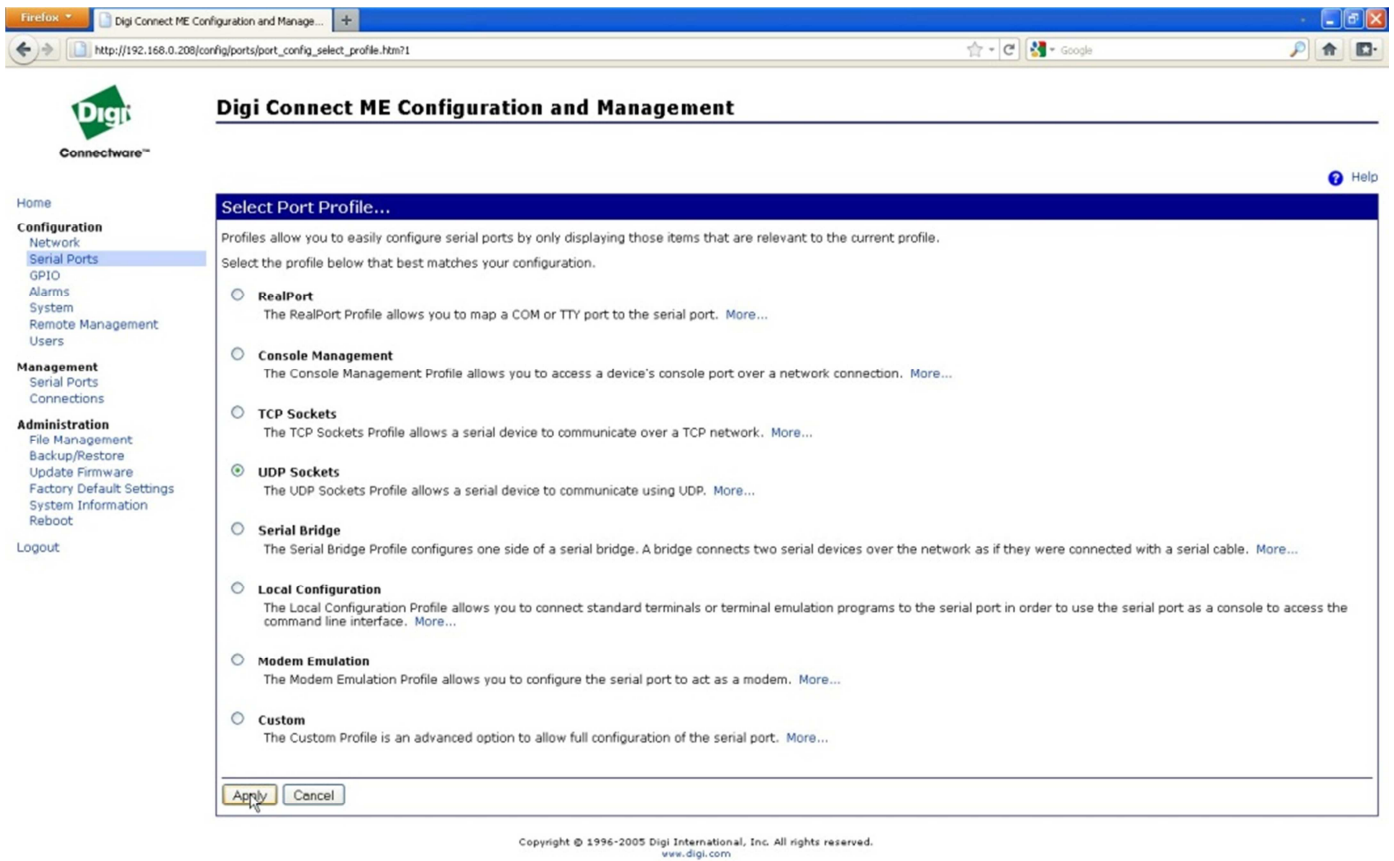


The screenshot shows the web browser window with the URL `http://192.168.0.208/config/ports/port_config_profile.htm?1`. The page title is "Digi Connect ME Configuration and Management". The navigation menu is the same as in the previous screenshot. The main content area is titled "Serial Port Configuration - GPS over Ethernet" and contains the following sections:

- Port Profile Settings**
 - Current Port Profile: **RealPort** [Change Profile...](#)
 - The RealPort Profile allows you to map a COM or TTY port to the serial port.
 - [RealPort Settings](#)
 - RealPort will set the serial port settings as directed by the PC application.
 - See the User Guide for RealPort installation instructions. The User Guide can be found on your CD or download.
 - [Basic Serial Settings](#)
 - [Advanced Serial Settings](#)

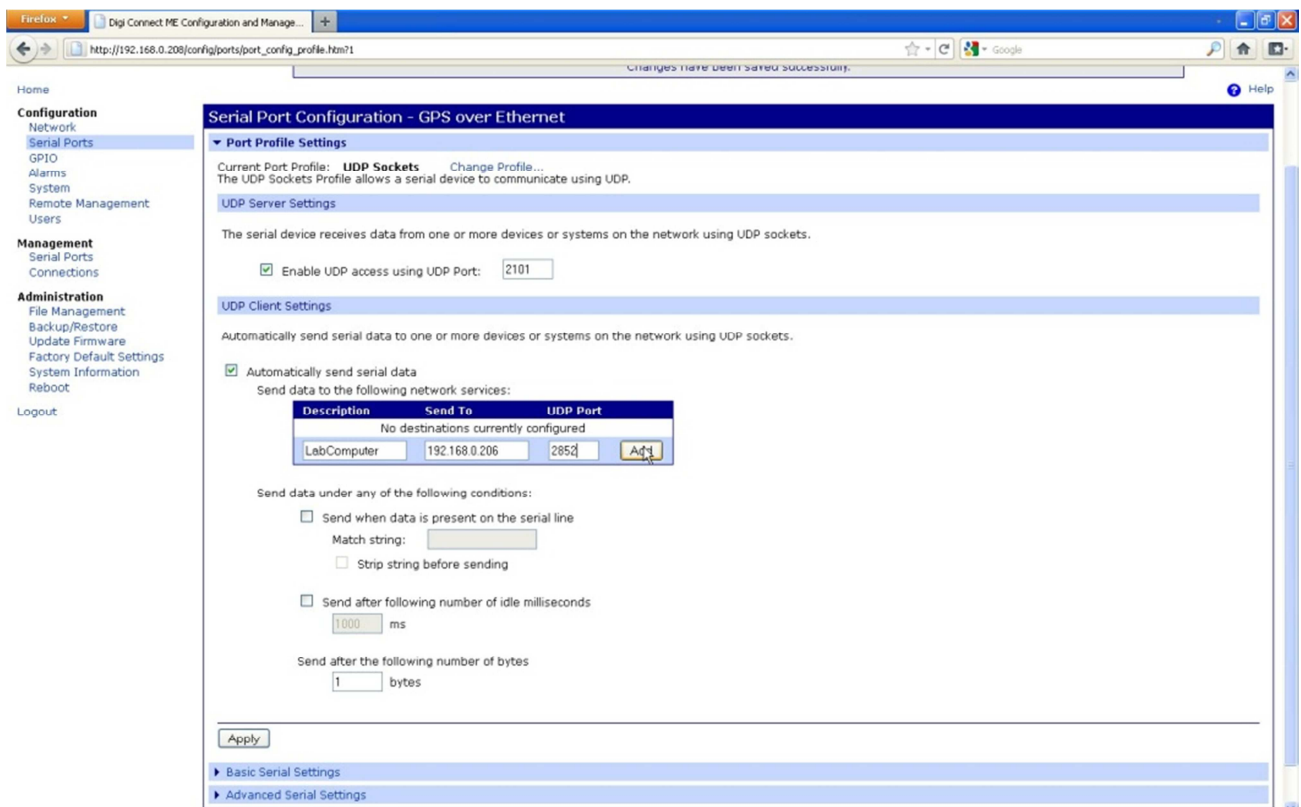
Copyright © 1996-2005 Digi International, Inc. All rights reserved. www.digi.com

STEP 5: Select the **UDP sockets** radio button and press **Apply**

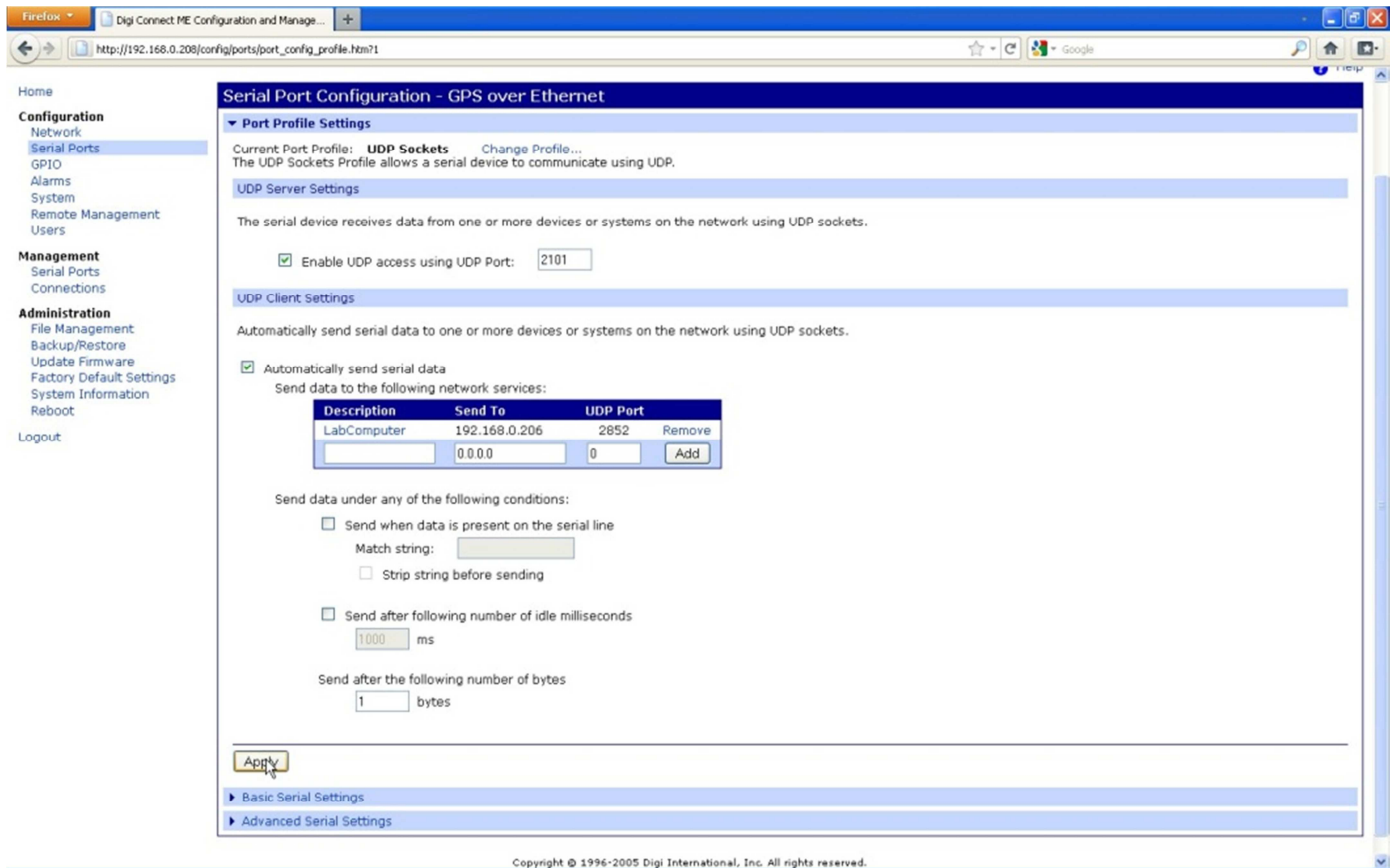


STEP 6: Configure the new page as shown below.

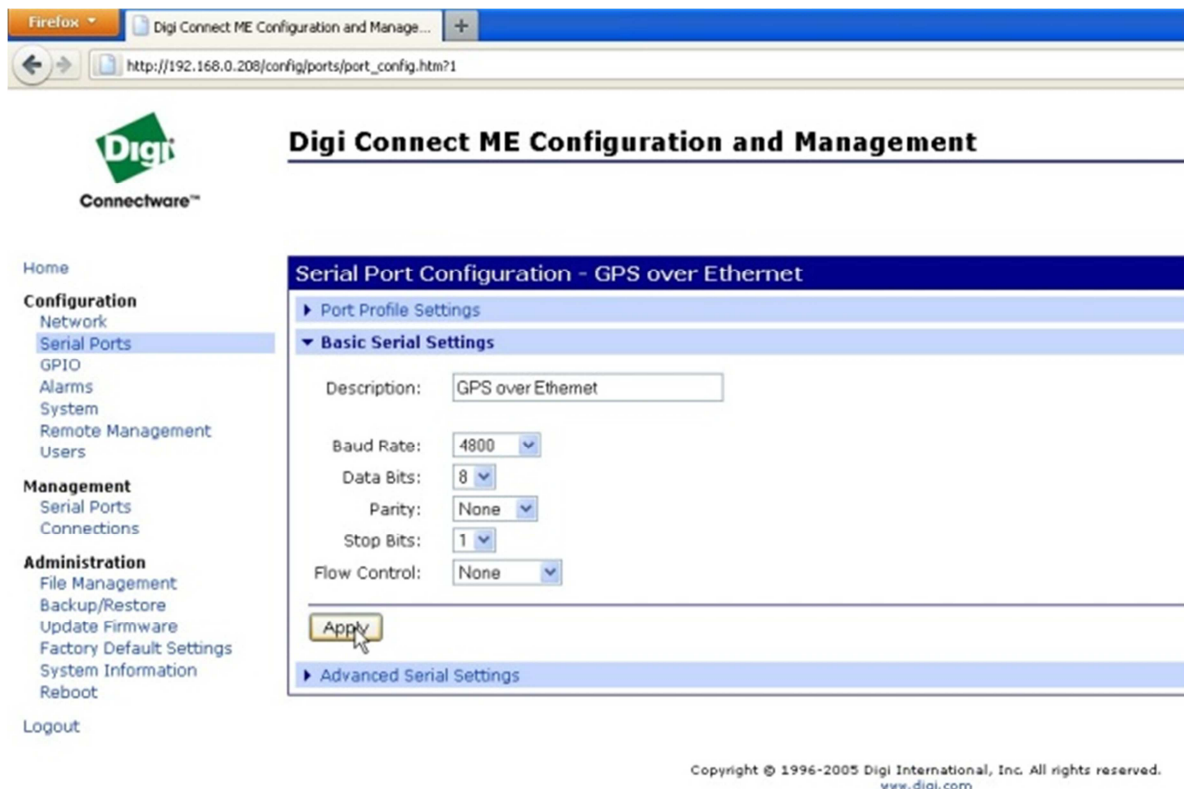
1. Select the **Automatically send serial data** option
2. Deselect the **Send after following number of milliseconds** option if enabled
3. Set the number of bytes to "1" in the **Send after the following number of bytes** option
4. In the box under the **Send data to the following network services** fill a distinctive name for the computer that will receive the data, the IP address and the UDP port the software is configured for reception and press the **Add** button. With the UDP multicast feature you can add multiple computers provided that you specify each time the above particulars and add it to the table



STEP 7: After successful configuration of the **Port Profile Settings** menu it should look as follows. Click on **Apply** to store the changes



STEP 8: Click on the **Basic Serial Settings** menu and configure **Baud rate** to 4.800, **Data Bits** to 8, **Parity** to None, **Stop Bits** to 1 and **Flow Control** to None. Supply a name in the **Description** edit box to describe configured NM-422ETH device



STEP 9: After successful completion select **Serial Ports** menu to confirm the changes. Click on **Logout** to end the configuration procedure

Firefox | Digi Connect ME Configuration and Manage... | http://192.168.0.208/config/ports/port_info.htm

Digi
Connectware™

Digi Connect ME Configuration and Management

Home

Configuration

- Network
- Serial Ports**
- GPIO
- Alarms
- System
- Remote Management
- Users

Management

- Serial Ports
- Connections

Administration

- File Management
- Backup/Restore
- Update Firmware
- Factory Default Settings
- System Information
- Reboot

Logout

Serial Port Configuration

Port	Description	Profile	Serial Configuration
Port 1	GPS over Ethernet	UDP Sockets	4800 8N1